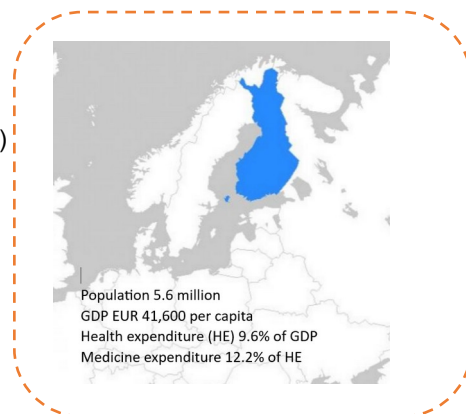


## FINLAND

Pharmaceuticals Pricing Board  
Jaana Martikainen  
email: [jaana.martikainen@gov.fi](mailto:jaana.martikainen@gov.fi)  
phone: +358 295 163 174

Social Insurance Institution of Finland (Kela)  
Kati Sarnola  
[kati.sarnola@kela.fi](mailto:kati.sarnola@kela.fi)  
+ 358 50 345 35 09



### Pharmaceutical pricing and reimbursement policies

#### Pricing of medicines

##### OUTPATIENT SECTOR

Non-reimbursable pharmaceuticals can be priced freely.

**Pharmaceuticals Pricing Board** (subordinated to the Ministry of Social Affairs and Health) confirms reimbursement status and a wholesale price of reimbursable medicinal.

Pricing procedures includes:

- External price referencing
- Internal price referencing
- Health economic evaluations

For generics: price linkage, generic substitution and reference pricing (RPS)

For biosimilars: price linkage, RPS (in stages from the beginning of 2024)

Decisions valid max 5 years; for new active substance max 3 years.

Wholesale remuneration: Not controlled

Pharmacy remuneration: Statutory regressive mark-up separately for prescription and non-prescription pharmaceuticals

VAT: Standard rate 24%, reduced rate for medicines 10%.

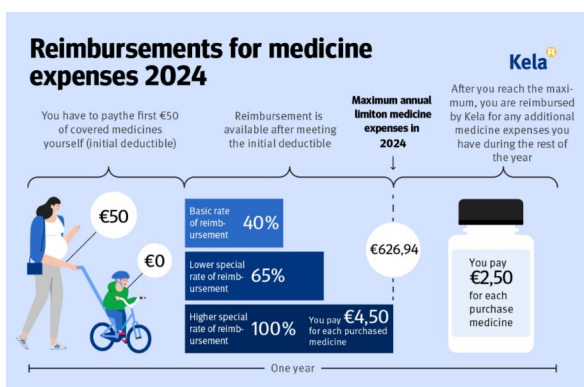
##### INPATIENT SECTOR

**Council for Choices in Health Care** in Finland is to issue recommendations on services incl. medicines included in the public health services. The Council works in conjunction with the Ministry of Social Affairs and Health.

**Health care regions** acquire the medicines through tendering and price negotiations. Very expensive medicines are acquired nationally.

#### Coverage/ Reimbursement

##### OUTPATIENT CARE



**RPS:** Generic groups: same active substance, quantity and pharmaceutical form, closely corresponding package size

**Mechanisms for vulnerable groups:** Higher reimbursement rate for medicines used for chronic and severe diseases (Special reimbursements).

##### INPATIENT CARE

Pharmaceuticals used in hospitals are included in the patient's daily charge.